

Wakatipu Community Foundation

Giving Impact Report 2023

Celebrating our First Five Years



Wakatipu
Community
Foundation



Our region's
Community
Foundation

Welcome

Welcome to the Wakatipu Community Foundation's 2023 Giving Impact Report. As we celebrate our first five years, we extend our heartfelt gratitude to you.

Our steadfast mission is to nurture philanthropy in the Wakatipu Basin. With your support, we've launched and delivered a myriad of initiatives including the Greatest Needs Fund, Impact100, Generation Give, corporate giving, grant assistance, and scholarship programmes. Our innovative approach to creating bespoke endowments, coupled with our smarter giving model, ensures that your generosity continues to resonate in the community you cherish.

Your contributions, when entrusted with us, are thoughtfully invested. This not only allows them to grow but also generate interest, culminating in a sustainable, long-term financial resource for the causes close to your heart. To leave a lasting legacy in the community, reach out to us.

Reflecting on our journey, we are indebted to Sir Eion Edgar. His invaluable contributions in the formative years of our organization have been monumental. Sir Eion shared his wisdom, helped shape our vision, and even lightened moments with tennis games and wine toasts. Without him, our achievements would not have scaled the heights they have. A heartfelt toast to Sir Eion, in his memory, Jan, and the entire Edgar family.



At our Professional Advisor Meeting, May 2021. Pictured left to right: Sir Eion Edgar, Hon Grant Robertson, Jennifer Belmont, Raymond Key



Message from the Chair

RAYMOND KEY

As we conclude another transformative year, it is an honour to present the Chairperson's Report for the financial year 2023. This year has been another remarkable journey, filled with milestones that have not only met but often exceeded our expectations. The resilience, generosity, and community spirit that define Wakatipu have been more evident than ever. This report marks the 5th anniversary of the foundation's establishment and for people like Jennifer and me it seems only recently we held the launch of the Foundation at the Heritage Hotel with such goals and ambitions. Much has been achieved to date, but most importantly, the awareness of the Foundation has grown significantly. We have attracted great people as supporters and volunteers and have made an impact in our Wakatipu community. This impact will increase for generations to come thanks to our initiatives, our ever-increasing Wills base legacy funds that will come into action over future years as well as the passion and hard work of Jennifer, Euni, and our volunteer-based trustees and ambassadors.

FINANCIAL MILESTONES

New Sub funds and Legacy Funds

- 18 New Sub funds: This year, we were thrilled to welcome 18 new sub funds to our portfolio. This is a significant increase that reflects the growing trust in our mission and the willingness of our community to invest in its future. These funds represent community groups, initiatives or the legacies of amazing people or families that want to help our local community for now and forever.
- \$10 Million in Wills-Based Legacy Funds: The commitment of individuals who deeply care for our region has been overwhelming. An additional \$10 million has been written into wills-based legacy funds, ensuring perpetual support for various community groups in Wakatipu.
- We are proud to say that we are one of the fastest growing community foundations in New Zealand.

Grants and Endowments

- \$450,000 in Community Grants: We have successfully disbursed \$450,000 in grants to deserving community initiatives, touching lives and making a real difference.
- \$500,000 in New Endowments: An additional \$500,000 has been added to our endowment funds, which will generate a sustainable income for future grants.

EVENTS AND COMMUNITY INITIATIVES

Biennial Gala

Our biennial Gala was a resounding success, drawing over 500 attendees. The event served as a platform to honour and celebrate the incredible volunteers who are the heartbeat of our community.

We strongly believe that too often volunteers are not recognised or under appreciated. This night is all about them!

Impact100

As I pen down this report, our Impact100 initiative is on the verge of granting another two \$100,000 transformational grants with 200 local women supporting the initiative. This will bring the total giving to over \$600,000. It was only 4 years ago that the global founder of Impact100, Wendy Steel, visited our foundation, organised by long term Foundation trustee Kristen Holtzman. Impact100 has achieved so much so quickly and is one of the leading chapters globally.

Love Wanaka, Love Queenstown Initiative

In a groundbreaking partnership with Lake Wanaka Tourism and Destination Queenstown, the Foundation is supporting the launched the Love Wanaka, Love Queenstown initiative. This program encourages both domestic and international tourists to contribute to our region, initially focusing on local environmental initiatives. This has so much potential and is necessary to balance the impact of tourism and reinvest into our community.

COMMUNITY IMPACT

Local Scholarship Program and Grant Writing Service

I must extend a special thank-you to Euni Borrie for her tireless efforts in launching and managing our local scholarship program. This platform allows groups, individuals, and families to set up their own scholarship funds under the Foundation's umbrella. Euni has also been instrumental in supercharging community groups to access funding through her free grant writing service. To date, this has facilitated more than \$600,000 in funding for a wide array of community groups.

Funding the Scholarship and Grant Writing Service

I would like to extend heartfelt gratitude to Craig and Emma Mawdsley, and other donors whose generous contributions have been pivotal in funding our scholarship and grant writing services. Their support has acted as a huge multiplier, enabling us to reach more people and make a greater impact.

SPECIAL ACKNOWLEDGMENTS

Donors and Supporters

We are profoundly grateful to our corporate supporters, which include Deloitte, Gibbston Valley Wine, Mackersy Property, Duncan Cotterill, Mountain Club, and Queenstown Airport Corporation, who joined us this year. We also acknowledge the invaluable support from the Tindall Foundation and the Dick and Diana Hubbard Foundation.

Trustees and Team

A special thank-you to our outgoing trustees Jonathan Gurnsey, Andrew Davis, and Ron Mackersy for their invaluable contributions. We are excited to welcome our new trustees Joan Kiernan, Stephen Brent, and Paul Rea as well as incumbent trustees Kristen Holzman and Michael Walker. A big shout-out to Jennifer for her relentless drive, passion, and hard work in growing the Foundation.

OUTLOOK

As we look ahead, one of our main priorities for the next 12 months will be to raise additional funds for our administrative, branding, and marketing efforts. This is crucial for expanding our reach and making more people aware of our services. Our whole team is excited about the future and how much our community can achieve.

CONCLUSION

The Wakatipu Community Foundation is more than just a charitable organisation; it is a community of people committed to making a lasting impact. It is only through the collective efforts of generous individuals and businesses that we can sow the seeds for a brighter future for our community.

Thank you for your unwavering support.

Warm regards,
Raymond Key
Chairperson, Wakatipu Community Foundation

Our Strategic Framework

Wakatipu Community Foundation Strategic Plan 2021–2025

Tagline: Your Community. Your Legacy. For Good.
Our Vision: Building a thriving and vibrant Wakatipu community through the power of giving.

Our Mission: To inspire and promote long-term giving in the Wakatipu Basin by connecting people who care with causes that matter in order to make a substantial and sustainable impact in our community.

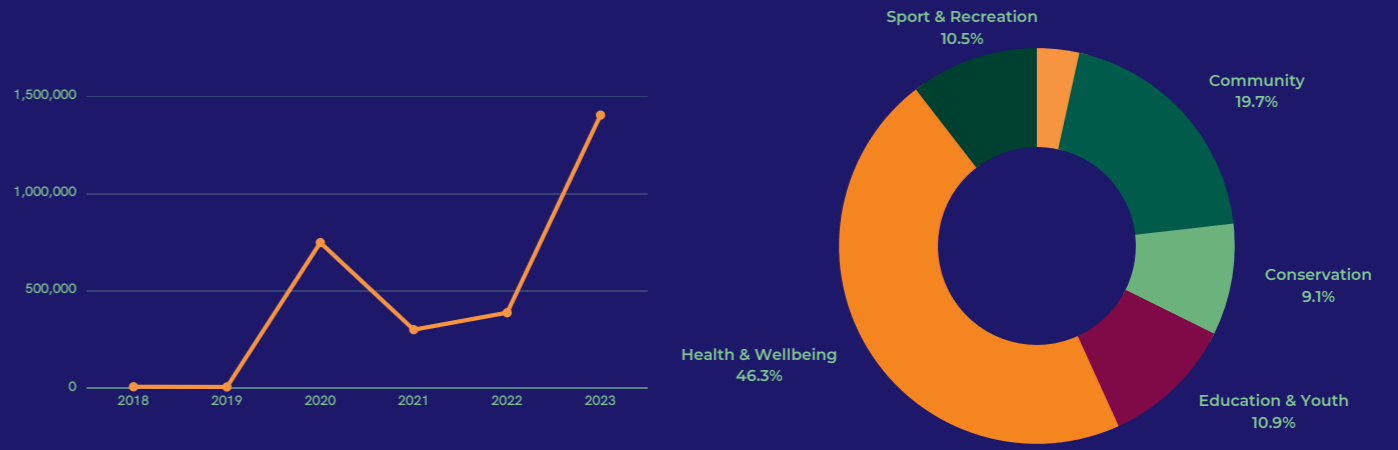
Summary

	DONORS	INVESTMENT	DISTRIBUTION	OPERATIONS
Strategic Aim	Engage and retain new and existing donors at increasing levels each year, with an authentically personal style.	Invest funds prudently to achieve maximum returns for minimum risk, to best meet the needs of our donors and the community.	Distribute grants strategically, in accordance with the donors wishes, and discretionary funds in line with the needs in the community as determined by QLDC Quality of Life survey and other metrics.	Recruit Board members, staff and volunteers who are professional, publicly trusted, personally committed and well supported to achieve WCF's goals.
Strategic Goals	Gain new donors to meet ambitious annual growth targets.	Confirm that Investment policies and processes are prudent and responsive to the market and WCF's needs.	Establish Distribution process and internal capacities that are robust, dedicated and specialised.	Regularly refresh governance to ensure breadth of skill sets, networks, reputation and community balance is achieved.
	Retain existing donors and enhance their level of satisfaction through WCF's know-how and connections.	Report regularly and urgently if needed.	Focus distributions on donor wishes, proven evidence of need, causes that matter and WCF's strategic intent.	Ensure that Staff and volunteers are skilled, driven and given the tools, support, resources and incentives they need to succeed.
	Establish endowment funds that are managed in efficient, donor-friendly ways.	Provide investment returns to support WCF's unique role in connecting generous people with causes that matter, forever.	Link outcomes to SDGs, QLDC Vision 2050, and Quality of Life Surveys and other metrics.	Demonstrate philanthropic leadership wherever possible as a Board and management team.
Main Targets	Increase the number of funds to 50 by 2025.	Growth in endowment funds to \$5 million by 2027.	Establish Grants Committee, Grants Administrator, Grants Strategic Plan. \$250k Annual Distributions by 2025.	100% Operational Funding continued through 2025; CRM fully implemented; Communications Plan Developed.





Growth and Impact: Grant Funds Distributed



Financial Summary 31st March 2023

INCOME	
NET INCOME	\$125,216.57
ENDOWMENT FUNDS RECEIVED	\$551,980.85
TOTAL INCOME	\$677,197.42
EXPENSES	
OPERATING EXPENSES	\$195,210.31
GRANTS AND DONATIONS MADE	\$458,129
TOTAL EXPENSES	\$653,339.31
NET PROFIT	\$23,858.11
ASSETS	
TOTAL CURRENT ASSETS	\$780,250.38
TOTAL NON-CURRENT ASSETS	\$1,316,118.89
TOTAL ASSETS	\$2,096,369.27
LIABILITIES	
TOTAL CURRENT LIABILITIES (INCLUDES GRANTS PAYABLE)	\$673,235.89
NET ASSETS	\$1,423,133.38

\$2.5M
AMOUNT OF GRANTS INTO THE COMMUNITY
2018-2023

\$4M
RAISED IN ENDOWMENTS AND
PASS THROUGH GIVING
2018-2023

\$35M
PLEGGED IN LEGACY BEQUESTS

We are delighted to provide an overview of the grants distributed between 2018 and 2023, reflecting the heart of our community's generosity and commitment to bettering various sectors.

With profound gratitude, we acknowledge our generous donors, dedicated giving circles, and the relentless initiatives of the community foundation and donor-driven contributions. Their collective spirit has been pivotal in fueling these distributions. In total, the grants have had a wide-reaching impact across varied sectors, enriching lives and fortifying the pillars of our community.

Living in such a generous and caring community is truly a blessing. The collective efforts, year after year, not only highlight the depth of compassion but also the shared vision of a prosperous future for everyone. Thank you to each and every individual and organization who has played a role in this transformative journey. Your benevolence continues to inspire and uplift.

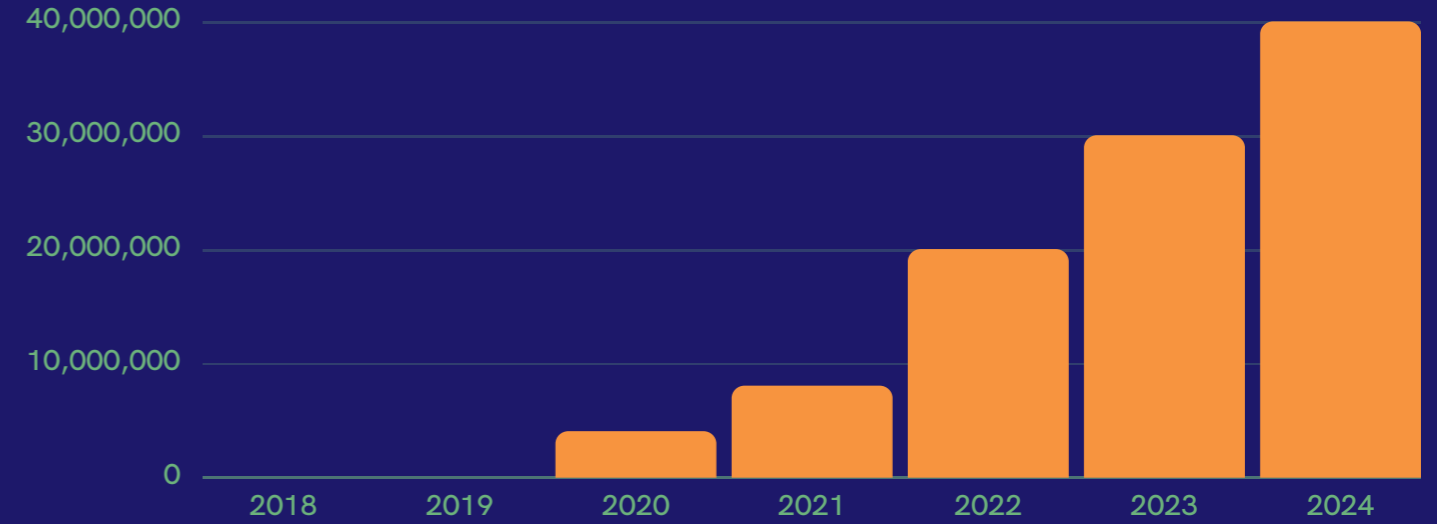


Through our generous donors, these are some of the groups we have supported over the last several years (2020-2023)

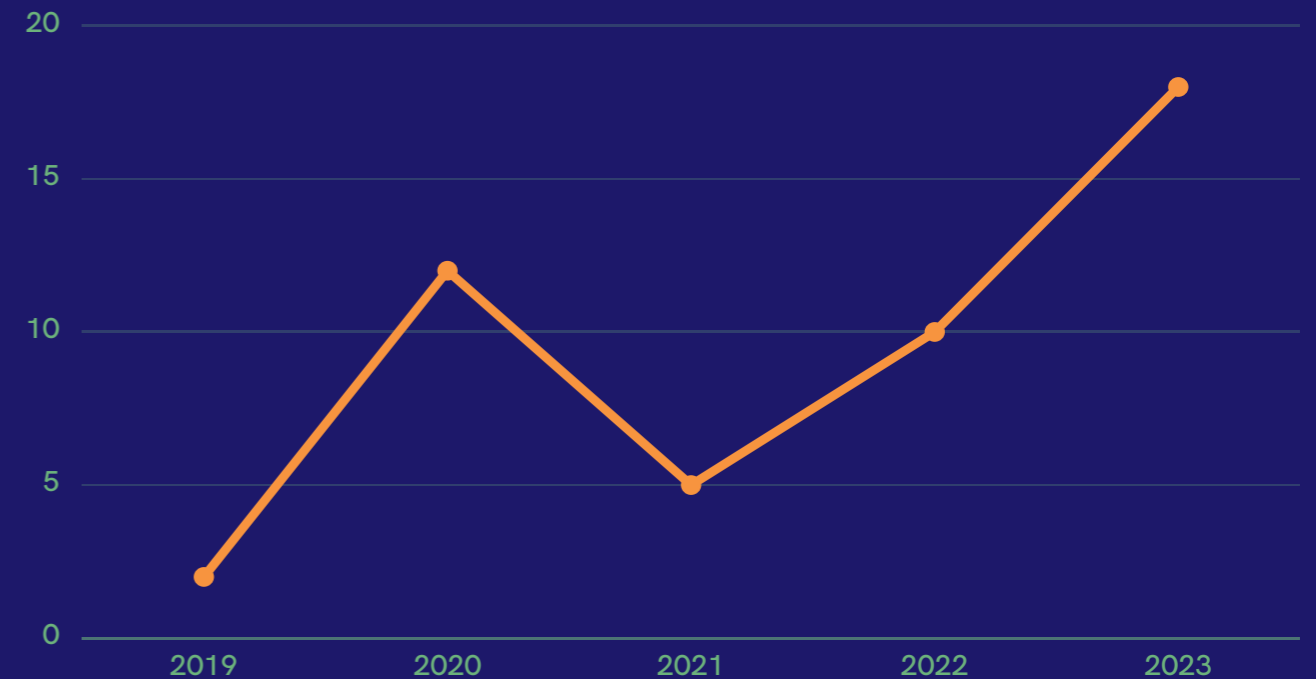
- Antarctic Trust
- Antenatal-Postpartum
- Arrowtown Autumn Festival Scholarship
- Arrowtown Charitable Trust
- Arrowtown Primary
- Baby Box
- Baskets of Blessing
- Canterbury Brain Trust
- Central Lakes Family Services
- Central Otago Life Options
- Champion Foundation - Matts Good Walk
- Citizens Advice Bureau
- City Mission Christchurch
- Cromwell Early Learning Centre
- Dipton Scholarship
- Fiordland Arts Society
- Fiordland Community -
- Fiordland Outdoor Playgroup
- Food for Love Wanaka
- Glenorchy Community Association
- Glenorchy Heritage Museum
- Glenorchy Primary
- Good Bitches Trust
- Happiness House
- Head Light Trust -
- Holyford Conservation Trust
- Japanese Family Society -
- Kahu Youth Trust
- Kate Moetaua Scholarships
- Kings View School
- Kiwi Harvest
- KPCA - Kelvin Peninsula Community Association
- Life Education Trust Heartland
- Otago Southland
- Mt Aspiring College
- Mums 4 Mums Cromwell
- Murihiku Maori & Pasifika Cultural Trust
- Nga Manu Hou
- NZ Deerstalkers Association
- Pasta Cafe
- Pivotal Point Charitable Trust
- Plunket
- Presbyterian Church
- QAMPI - QAMPI Immigrant Training
- QLDC - Kia Kaha Community Hub
- Queenstown Associated Football Club
- Queenstown Chinese Community
- Queenstown Community Hub Charitable Trust
- Queenstown Housing Trust
- Queenstown Hub Trust
- Queenstown Indian Community
- Queenstown Islamic Centre
- Queenstown Korean School
- Queenstown Primary
- Queenstown Rotary Club
- Queenstown Tennis Club
- Queenstown Trails Trust
- Remarkables Primary
- Robotics Trust - Generation Give Grants
- Routeburn Dart
- Salvation Army
- Shotover Primary
- SKAL Queenstown
- Southern Lakes Sanctuary
- Southern Wellbeing Trust
- St John
- St Joseph's School
- Sunrise Foundation
- Te Atamira Whakatipu Community Trust
- Te Kura O Take K Te Hau Toka
- The Kiwi Kit Community Trust
- The Lightfoot Initiative
- The Whitmarsh Academy - WHS
- Girls football coaching Term 2
- Three Lakes Cultural Trust
- Tumble Time Te Anau
- Turn The Corner
- Turn Up the Music
- Victim Support
- Volunteer South
- Volunteering Otago
- Wai Wanaka
- Wakatipu High School
- Wakatipu High School Foundation
- Wakatipu Presbyterian Church
- Wakatipu Reforestation Trust
- Wakatipu Toy Library
- Wakatipu Youth Trust
- Wanaka Nepalese Society
- Wanaka Wastebusters
- YSAR Trust



Growth and Impact: Bequests and Number of Funds



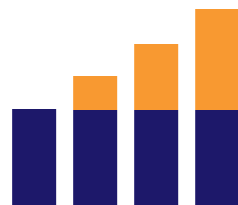
Amount of pledged bequests per year with anticipate bequests for FY 2024



Number of funds initiated per year



Your gift



is invested and grown



and the ongoing income earned



goes to the local causes you love.

Our Growing Family of Local Philanthropy



Youth Philanthropy Programme

GENERATION GIVE
a programme of **YPNZ**

Impact100 Wakatipu Chapter



Spirit of the Wakatipu Gala and Awards

WAYFARE
SPIRIT OF THE
WAKATIPU
GALA & AWARDS

WAKATIPU
COMMUNITY
FOUNDATION

**Wakatipu
Greatest Needs Fund**

Scholarship Funds

Charity Endowments

Family Endowments

Workplace Giving

Corporate Endowments

**Community
Giving**



In the news

IMPACT 100 Wakatipu

Impact100 has been making a big, well-earned impact in the region since 2020 and is one of the Wakatipu Community Foundation initiatives.

Impact100 is a very simple concept where one hundred women each donate \$100. Once they have that money collected, groups in the community are invited to apply for the whole amount, a whopping \$100,000 with each of the four runners up receiving a \$5000 grant. The applications are considered, and the finalists present their projects, showing how they will use the money, who will benefit from this new project, and why their idea will make the biggest positive impact in the community.

Over the last 2 years, \$320,000 has been raised through Impact100 and donated to local organisations. The 2022 winner will be announced at a dinner on October 27th.

The inaugural \$100,000 Grant Winner in 2020 was Living Options. In 2021 the grant went to Pivotal Point Charitable Trust.

LIKE MUSIC TO THE EARS

By Sue Fee
Turn Up The Music Charitable Trust wants to instill the love and joy of music in every pre-school centre in the Wakatipu Basin from February next year.

A successful pilot programme for the proposed GO MUSIC concept has already introduced hundreds of local preschoolers to the delight of music.

The trust, formed in 2019, now wants to extend the programme to every local child under five, by providing free music lessons at the almost 40 early childhood centres around the basin for the next three years. Turn Up The Music was recently named among the five finalists that applied for Impact100 Wakatipu's \$148,000 grant from its supporters. The winners will be announced on October 27 once the supporters have voted for their preferred choice. Each of the five finalists will receive \$5000 coming from this year's \$148,000 funding pool.

"If we're successful the funding would ensure the programme could run in every centre for three years," says Mary. "We're sure that from then on the Ministry of Education, and other funders would support this initiative, once they've seen the outcomes." Early childhood teachers would observe and document the outcomes, which Mary says have been proven, both nationally and internationally, time and time again.



Erica Hastie shares some fun and laughter with local preschoolers.

"Music is joyful and children need the uplifting joy of music," says Mary. "Children have been very anxious over the last few years and music is not only fun, it adds to learning. For instance, holding a beat has a strong maths underpinning. Music supports children to focus and rhythmic body movement engages and connects the brain. Early reading skills are also heightened through learning new words through song." These all help in readiness for school, she says.

Wakatipu parents and families have had a tough time and children pick up on that vibe, says Mary. "Some local children, if they're two or three, have never been in a situation without people wearing masks and recently and faces are important for babies' brains."

Mary is socially and emotionally stimulating. "They often have to share and move together, while also having an opportunity to let out what they haven't been able to," says Mary. "It assists with all brain connection and engagement. Kids need to have fun and laugh again." Mary says the experience of music from an early age stays with youngsters forever. "Any early childhood teacher will say that the impact of Covid was very hard on children, emotionally, physically, intellectually, even spiritually, as it affects their free spirit and well-being," she says.

"We already offer subsidies and scholarships to primary school aged children and we want to broaden that primary age base to give younger children a solid base in music too. You build a really solid base very young it will benefit the children all the way through their lives."

Personally, Mary always taught music during her kindergarten teaching career. It was a huge part of the curriculum back then, but for whatever reason it's not been as much of a priority for resources and funding, she says. During her 25 years producing successful children's television shows, including the Splat Catto preschool series, and more recently, The Four and Code Fun, music has been key. "I've probably produced 17 early childhood shows in 30 years and there's always been a strong focus on music," she says. "I'm extremely passionate about GO MUSIC and the enormous impact it would make on the young children and families in the Wakatipu."



Erica Hastie creating fun for local preschoolers through music.

IMPACT 100 Wakatipu

Impact100 has been making a big, well-earned impact in the region since 2020 and is one of the Wakatipu Community Foundation initiatives.

Impact100 is a very simple concept where one hundred women each donate \$100. Once they have that money collected, groups in the community are invited to apply for the whole amount, a whopping \$100,000 with four runners up a \$5000 grant each. The applications are considered, and the finalists present their projects, showing how they will use the money, who will benefit from this new project, and why their idea will make the biggest positive impact in the community.

Over the last 2 years, \$320,000 has been raised through Impact100 and donated to local organisations. The 2022 winner will be announced at a dinner on October 27th.

The inaugural \$100,000 Grant Winner in 2020 was Living Options. In 2021 the grant went to Pivotal Point Charitable Trust.

TE ATAMIRA - AN ARTS AND CULTURAL PLATFORM FOR ALL

By Sue Fee
Te Atamira is now keen to expand participation and opportunities for equal access to creativity. The new programme would be fun, support fine motor skills and cognitive development, and help manage emotions in our complex world, she says.

The talented local arts and cultural scene has been supported for decades by hardworking volunteers and has long been hard to reach. With more than 400 artists registered with the Te Atamira Cultural Trust there is an opportunity to develop capability, broaden engagement and further support arts practice with residences and internships, Olivia says.

"It's required an enormous community effort to establish Te Atamira. Hundreds of people have contributed ideas and provided feedback," says Olivia. "We've been supported by more than 400 generous donors and the fit-out was completed by a locally based team of architects, engineers, project managers and Cook Brothers Construction. Despite the challenges of Covid and material shortages the outcome has been a very functional and fit for purpose space, the most beautiful I've ever seen in the basin."

Te Atamira Wakatipu Charitable Trust is still fundraising to complete the fit-out, which has been extremely modest.

"We have hit the ground running," says Olivia. "Our children's school holiday programme this month (October) has included for 290 children with only a few spaces left. It attracted a street dance workshop, Arts Foundation, Springboard Awards CONAHL."



Robin Baker in the baby box at Te Atamira. Photo credit: Neville Porter

IMPACT 100 Wakatipu

**TOUCHING HEARTS
ST JOHN'S TAKES TOP IMPACT100 GRANT**

By Sue Fee
There was a cause that tugged at the heartstrings of the more than 100 women benefactors who voted on this year's live Impact100 Wakatipu finalists and so St John's Wakatipu has taken out 2022's main \$148,000 funding grant.

Some beautiful stories and pitches were shared by the five finalists for this year at a gala dinner at Rydges Hotel on Thursday evening (October 27). More than 100 Impact100 women supporters who donated a total of \$148,000 for the year's round listened intently to detailed presentations about what the much-needed money would be spent on. It was then up to them to vote for a winner, with the other four charities each receiving \$5000 grants to continue their great work. These were Youth Search and Rescue Trust, Life Education Trust Heartland Otago Southland, Turn Up The Music Trust and Te Atamira Wakatipu Community Trust.

Impact100 Wakatipu chair Clare Irons says, as always, it was an extremely difficult decision to make. Needs included everything from pre-school music development programmes to kids' mental health and well-being, but St John's really really moved the women supporters, she says. "Each person from each organisation really spoke from the heart," says Sarah (Blakham, from St John's) who moved everybody and that caused us to vote for St John's. It was such a special evening for everyone."

St John's will receive \$148,000 in funding with St John's Wakatipu's "very special friends" who use the services, as well as volunteers and staff, she says. "To have a wheelchair mobility capable health shuttle means we can serve more members of our community and enable them to get to their health-related appointments. This means they can also engage with our community through our St John's Friendship Drive programme, which addresses isolation and loneliness and promotes connection, friendliness and well-being."

Clare says there have been some amazing stories of how the four other finalists have spent their \$5000 grants too. In 2020, the first year of the programme, Turn Up The Music Trust used its \$5000 to make an amazing video which helped school aged programme it wanted funding for.

Since its inception in 2020 Impact100 Wakatipu has donated almost \$500,000 to charities in the Wakatipu.

Each of the women donated \$1000 each and in these tougher economic times Clare says they've extended the timeframe for supporters to sign up



Clare Irons, Sarah Blakham (Community Engagement Coordinator, St John's), Kristin Darriman (Board Member, St John's)

to donate for next year's funding round. "They can register their interest this year for 2023 and we're allowing them to part pay between November this year and the end of April 2023, then pay in full." They are also welcoming local businesses to support the wonderful, community-spirited Impact100 winners. It was an incredible evening and we are just so grateful to these women, some of whom have even offered to become volunteer drivers on our Friendship Drive," says Sarah. It was extra special sharing the wonderful news that St John's would receive \$148,000 in funding with St John's Wakatipu's "very special friends" who use the services, as well as volunteers and staff, she says. "To have a wheelchair mobility capable health shuttle means we can serve more members of our community and enable them to get to their health-related appointments. This means they can also engage with our community through our St John's Friendship Drive programme, which addresses isolation and loneliness and promotes connection, friendliness and well-being."

Clare says there have been some amazing stories of how the four other finalists have spent their \$5000 grants too. In 2020, the first year of the programme, Turn Up The Music Trust used its \$5000 to make an amazing video which helped school aged programme it wanted funding for.

Since its inception in 2020 Impact100 Wakatipu has donated almost \$500,000 to charities in the Wakatipu.

Each of the women donated \$1000 each and in these tougher economic times Clare says they've extended the timeframe for supporters to sign up

LIFE EDUCATION TRUST HEARTLAND OTAGO SOUTHLAND - STANDING TALL

By Sue Fee

Harold the Gracie and his exciting interactive music classroom have been bringing school groups in the Wakatipu for almost 20 years since the Heartland chapter of the Life Education Trust was established here in 1998.

Since then a full-time educator has travelled around the region from Maxwell to Gore, Otago, Wanaka, Queenstown and Gore delivering the trust's targeted health and wellbeing programme to schoolchildren in his mobile classroom. Distinctly recognisable as the trust's mascot, Harold the Gracie, is not only on the mobile classroom exterior, and in a where he has become a familiar sight in the classroom area to go to the classroom every year, as a quantity of a lot of Queenstown schools only get visits every second year."

The trust covers content across five key teaching strands through to programme - identity and resilience, relationships and communities, food and nutrition, human biology and substances. "Harold has always been a popular topic, but we've certainly noticed the need for this teaching in far greater since Covid," says Sue. "We need our children to do. Each grade is also unique. The spotted pattern is unique on every grade and we also want children to know they are unique too."



"We have state of the art technology so the programme is engaging and fun. It's a different learning environment outside the normal classroom. Harold's interaction makes it all the more exciting. And, of course, the message Harold delivers is reliable for children. Teachers at each school request what they want their children to focus on. We know what's going on in their classrooms so the lessons can be tailored to suit those needs."

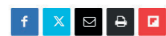


"We've got a small amount in our own reserves - money that we've been saving for many years for this purpose. The Impact100 grant would greatly assist us to reach our target," says Sue. "We would mean we could take the classroom to each school in the region of the Wakatipu Basin every year. We travel to a lot of kind related schools to ensure no child misses out. We like to see each one."

Depending on the size of the school, the mobile classroom can be parked up for two to three weeks at a time. "I'll be in Queenstown. It's there for a whole term and our educator, Pip Teal, stays locally." Pip is based in Lawrence and when the classroom is in other parts of the region she drives to and from the classroom each day. "Having a second mobile classroom unit would take the pressure off for Pip, who's been with us for 14 years, and she's really stretched at present to get around all the schools."



In the news



Three lifetime contribution awards were made at last Saturday's Spirit of the Wakatipu Gala & Awards evening, organised by the Wakatipu Community Foundation.

The recipients, recognised for their "extraordinary and enduring philanthropic contribution to the Whakatipu", were the late David Crow, Jillian and Dick Jardine and Darren Rew.

A one-time meteorologist, David Crow, who died last year, aged 88, kept daily weather recordings, almost without fail, for 59 years, and was a jazz aficionado.

The Jardines this year formally gifted 900 hectares of their Remarkables Station to the QEII National Trust to ensure its landscape's protected in perpetuity.



Embracing community spirit: Dick and Jillian Jardine

They earlier gifted their original homestead to the University of Otago for use as an academic retreat.

A respected kaumatua, Rewi was rewarded for leading the Māori community through the pandemic and his contributions to youth, culture, employment, community and the environment through initiatives like founding the Mana Tahuna charitable trust.

Mayor Jim Boulton gave a special mayoral award to all the local organisations and volunteers who helped the community through Covid.

Other award recipients were the Bruce Grant Youth Trust (youth impact), Queenstown Lakes Baby Box Charitable Trust (health and wellbeing), The Rees Hotel (corporate citizenship), Lake Hayes Restoration Project (environment and sustainability), Wakatipu Search & Rescue (resilience), Age Concern (senior support), Amy Wilson-White (sport and recreation), Three Lakes Cultural Trust (arts and culture), Paul Winders (education), Hannah Batrick (rising star) and Debbi and Paul Brainerd (social impact innovators).

The spirit of the community award was shared by Jillian and Dick Jardine and the Rotary Club of Queenstown.

Held at the Events Centre, the biennial awards, postponed a year due to Covid, were attended by 420 people.

scoop@scene.co.nz

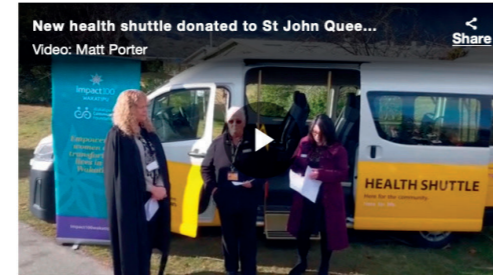
- Advertisement -

Saturday, 19 August 2023

Gift of shuttle assists region's immobile patients

80 0

Regions > Queenstown



A new shuttle to take immobile people to health appointments and out and about on "friendship drives" was welcomed by Hato Hone St John Wakatipu at a blessing ceremony in Queenstown yesterday.

The wheelchair-accessible vehicle was made possible by a \$148,000 grant from Impact100, a "women's giving circle" that is an initiative of the Wakatipu Community Foundation.

Impact100 members joined with St John staff and volunteers at the ceremony, in which Wakatipu chaplain the Rev Dr Robyn McPhail led the blessing with prayer and a sprinkling of holy water on the new shuttle.

Members of Impact100's giving circle, now in its fourth year, give \$1000 each, and local charities are then invited to submit a funding application. These are whittled down to five finalists.

Impact100 Wakatipu chair Clare Irons said the shuttle was chosen from five local projects.

"The transformational difference it will make to people's lives was the thing that encouraged people to vote for this fabulous health shuttle," she said.

The application was led by St John community engagement co-ordinator Sarah Bloxham, who said she was proud to have played a part in delivering the shuttle for the district.



St John Wakatipu staff, volunteers and Impact100 members with the new health shuttle are Julie Taverner (front, St John) and (back, from left) Sarah Bloxham, Kirsten Dennison, (both St John), Clare Irons (Impact100), Joanne Conroy (St John), Eunice Borrie (Impact100), Jennifer Belmont (Wakatipu Community Foundation), Rev Dr Robyn McPhail (St John), Joan Kiernan and Juliana Fullerton-Smith (both Impact100). PHOTO: MATT PORTER

"The shuttle enables locals who are unable to drive to get to their health appointments that are outside Queenstown, in particular Invercargill or Dunedin. The new shuttle with a wheelchair hoist will mean we can help more people to access important health services."

As well as the shuttle, Impact100's funding covered three years of fuel for the vehicle.

St John New Zealand national community care manager of health Julie Taverner said it was "amazing" that a group of women had come together to provide the big capital outlay for the shuttle and running costs.

On weekends the health shuttle acts as a mobility vehicle, taking mainly elderly people on outings called "friendship drives".

St John Wakatipu Kawarau area committee chair Kirsten Dennison Chair said ageing or disability should not equate to isolation or loneliness.

"The local friendship drives have uplifted countless lives and allowed individuals to continue contributing to our community. This transcends boundaries, not just physical, but also mental, emotional, and social wellness."

The grant has also enabled St John to purchase a new Rav4 vehicle to be used for other community education outreach programmes, connecting passengers to the shuttle and supporting the St John youth programme.

matt.porter@odt.co.nz

Our team

Trustees



Raymond Key
Chair



Joan Kiernan
Vice-Chair



Steve Brent



Kristen Holtzman



Jennifer Belmont
Founding Trustee
and CEO



Michael Walker



Paul Rea



Eunice Borrie
Grants and
Scholarships

Founding Ambassadors



Sir Eion Edgar
in memoriam

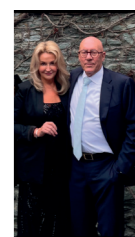
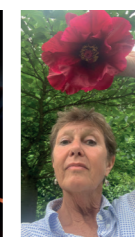


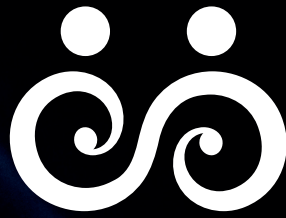
Mark Taylor



Kaye Parker

Ambassadors





Wakatipu
Community
Foundation

Our Partners:

Our Friends:

